

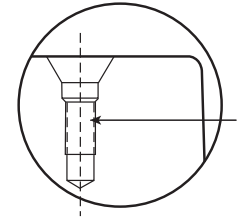


NAAMS **Metric**
GUIDE PINS

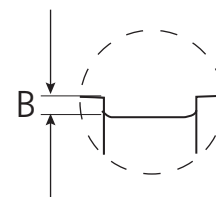
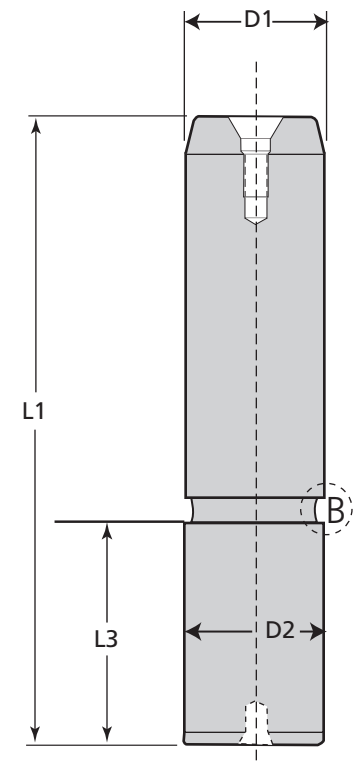
MDL[®] NAAMS Metric Guide Pins

MDL NAAMS Guide Pins conform to the standards agreed to by the North American Automotive Metric Standards group.

MDL PART NUMBER	NAAMS PART NUMBER	D1	D1 Tol g6	B	D2	D2 Tol r6	L1	L3
G51025080	G512508	25	-.007 -.020	2.5	25	+.041 +.028	80	36
G51025100	G512510						100	
G51025125	G512512						125	
G51025140	G512514						140	
G51025160	G512516						160	
G51025180	G512518						180	
G51032100	G513210	32	-.009 -.025	2.5	32	+.050 +.034	100	45
G51032125	G513212						125	
G51032140	G513214						140	
G51032160	G513216						160	
G51032180	G513218						180	
G51032200	G513220						200	
G51040160	G514016	40	-.009 -.025	3.5	40	+.050 +.034	160	56
G51040180	G514018						180	
G51040200	G514020						200	
G51040225	G514022						225	
G51040250	G514025						250	
G51050160	G515016	50	-.009 -.025	3.5	50	+.050 +.034	160	70
G51050180	G515018						180	
G51050200	G515020						200	
G51050225	G515022						225	
G51050250	G515025						250	
G51050280	G515028						280	
G51050315	G515031	315						
G51063200	G516320	63	-.010 -.029	5.5	63	+.060 +.041	200	80
G51063225	G516322						225	
G51063250	G516325						250	
G51063280	G516328						280	
G51063315	G516331						315	
G51063355	G516335						355	
G51063400	G516340						400	
G51063500	G516350						500	
G51080250	G518025						80	
G51080280	G518028	280						
G51080315	G518031	315						
G51080355	G518035	355						
G51080400	G518040	400						
G51080500	G518050	500						



32, 40, 50 & 63 Dia. guide posts have M8 x 1.25 - 12 thread; 80 Dia. guide posts have M12 x 1.75 - 18 thread to facilitate handling from deep freeze



4572 North Long Road
Columbus, IN 47203
(800) 574-0059 (812) 373-0021
(812) 373-0042 (fax)
www.mdlcomponents.com